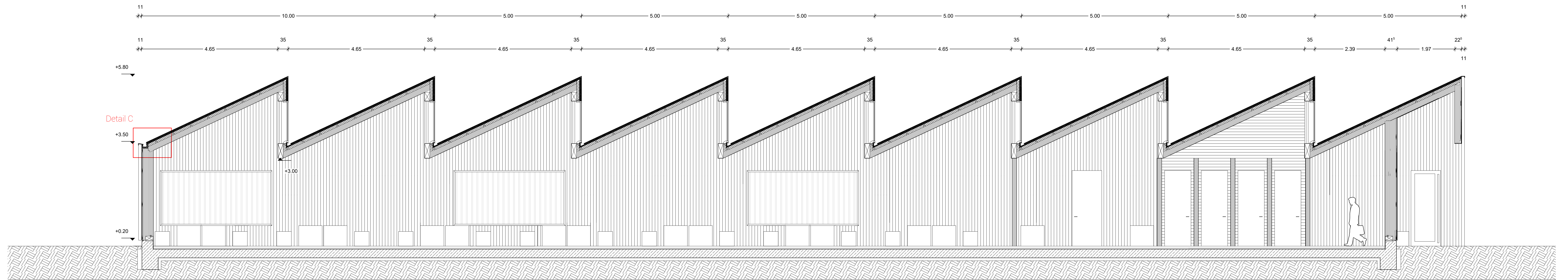
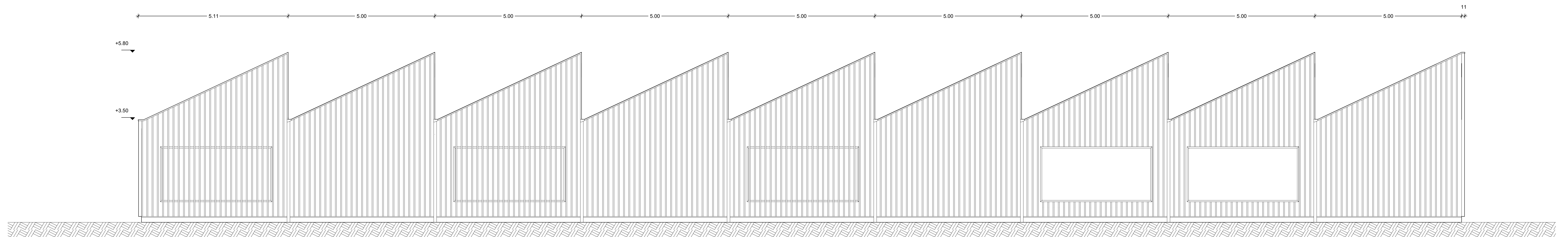


Grundriss 1:50

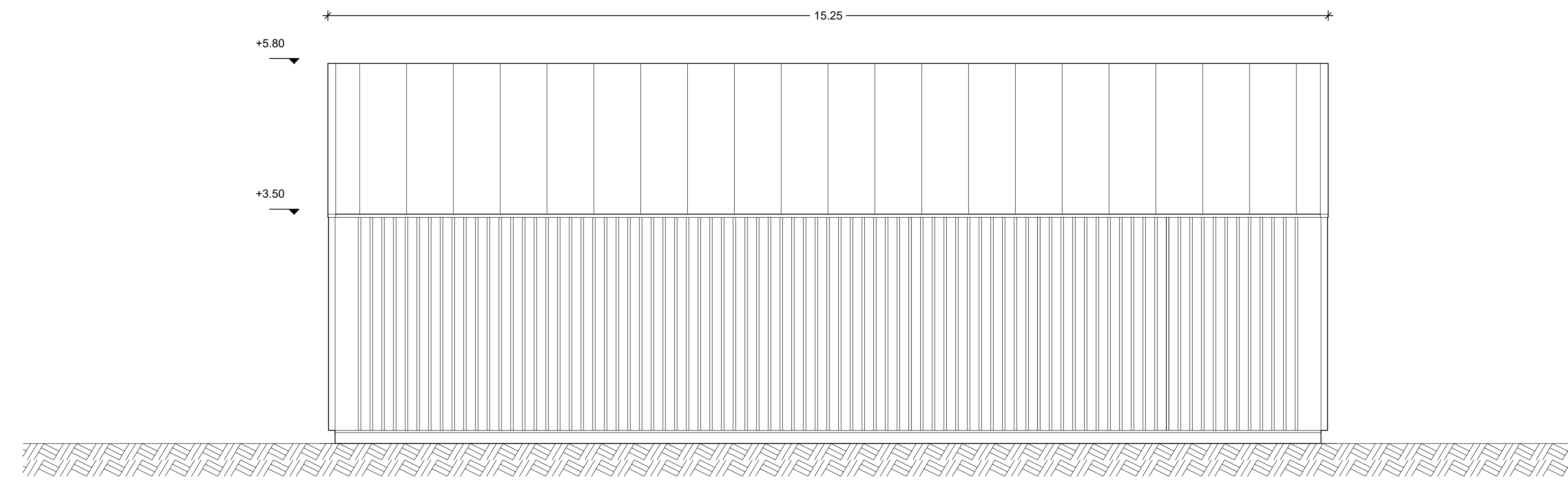




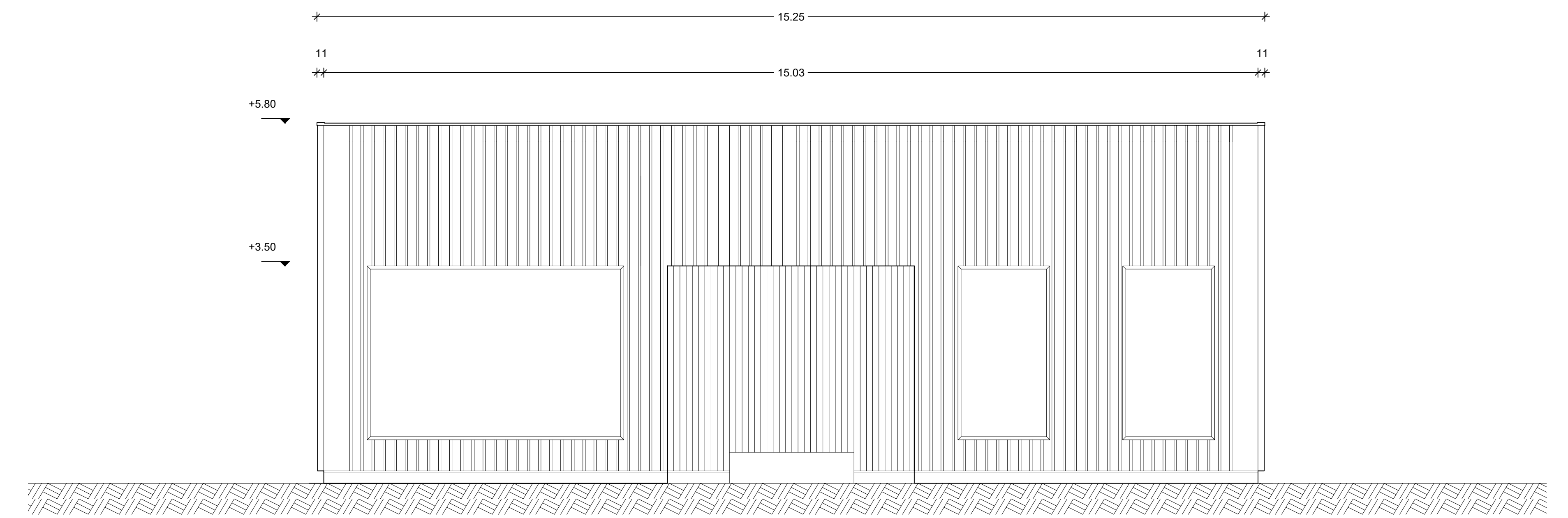
Schnitt B-B 1:50



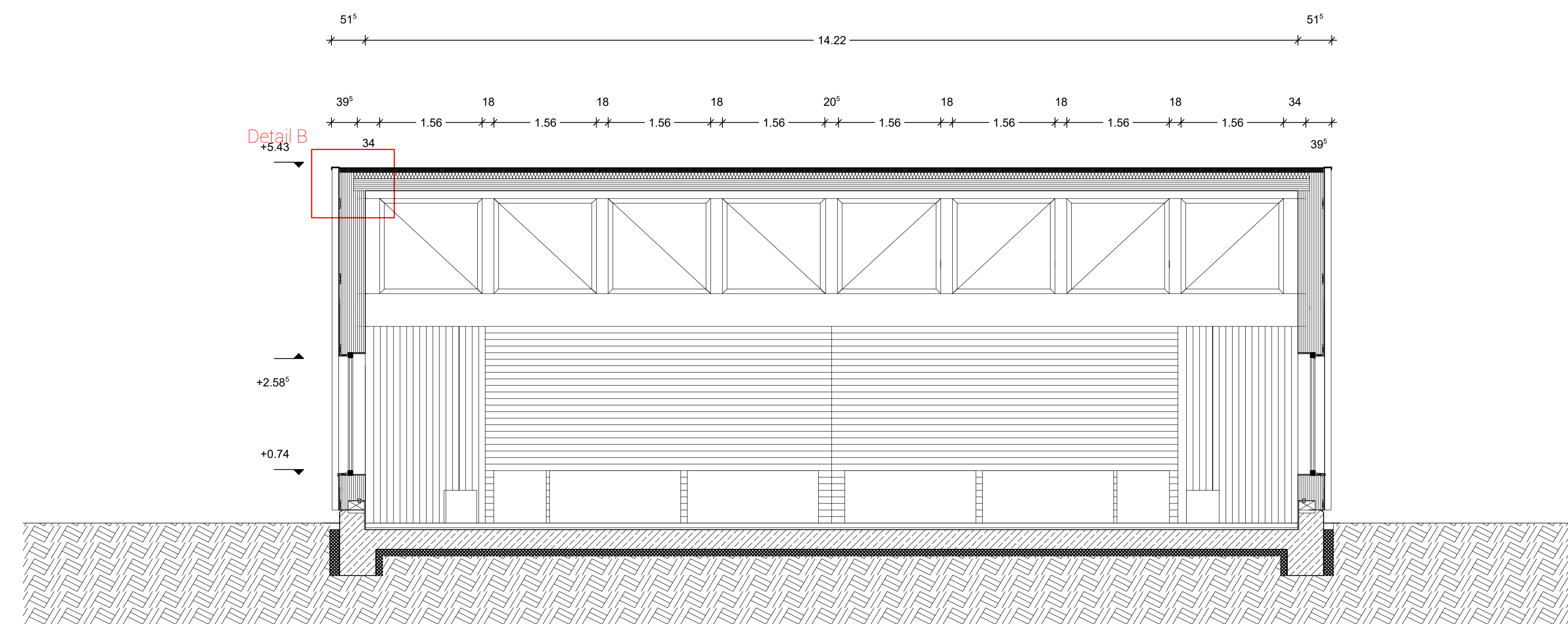
Ansicht Ost 1:50



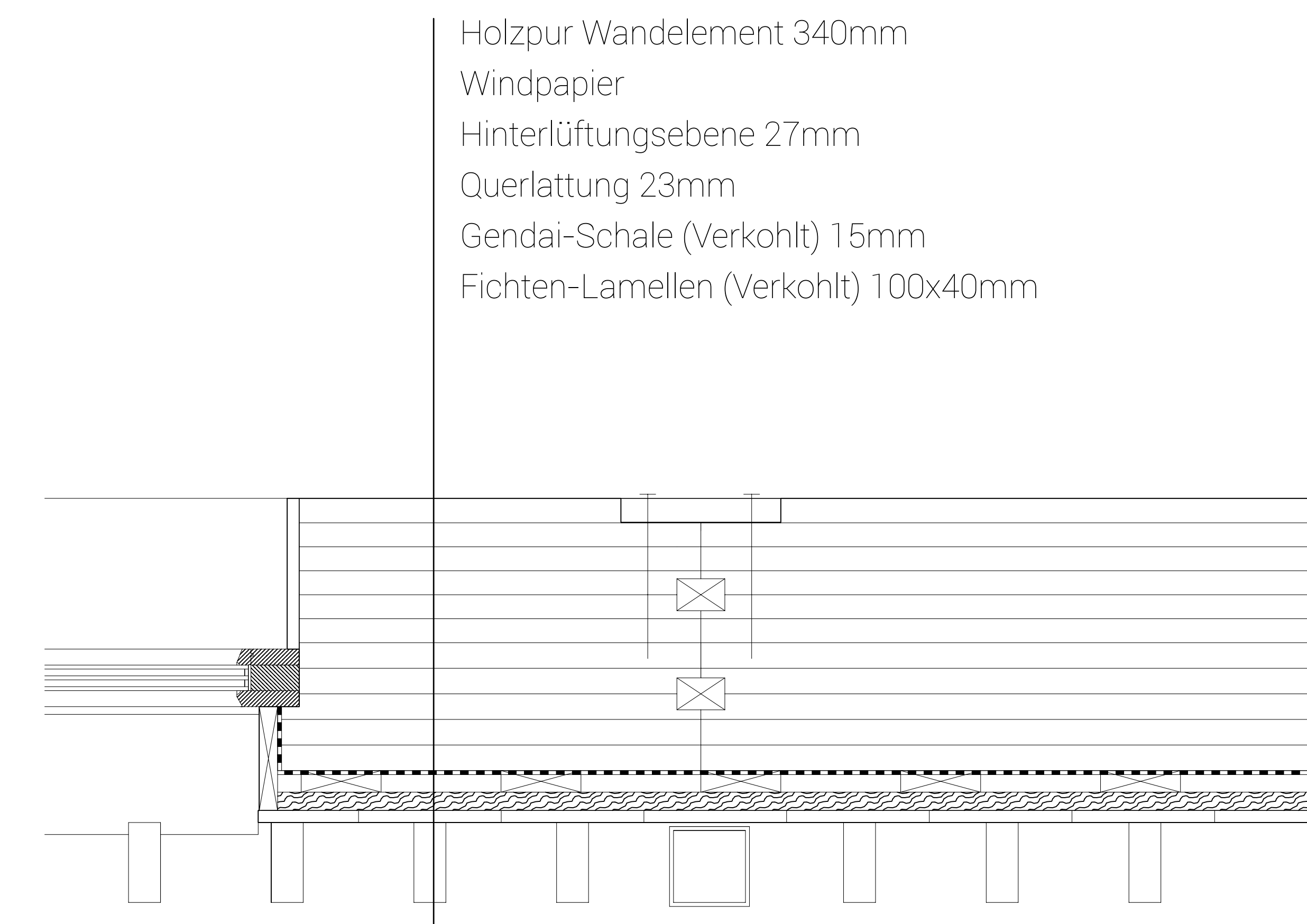
Ansicht Süd 1:50



Ansicht Nord 1:50

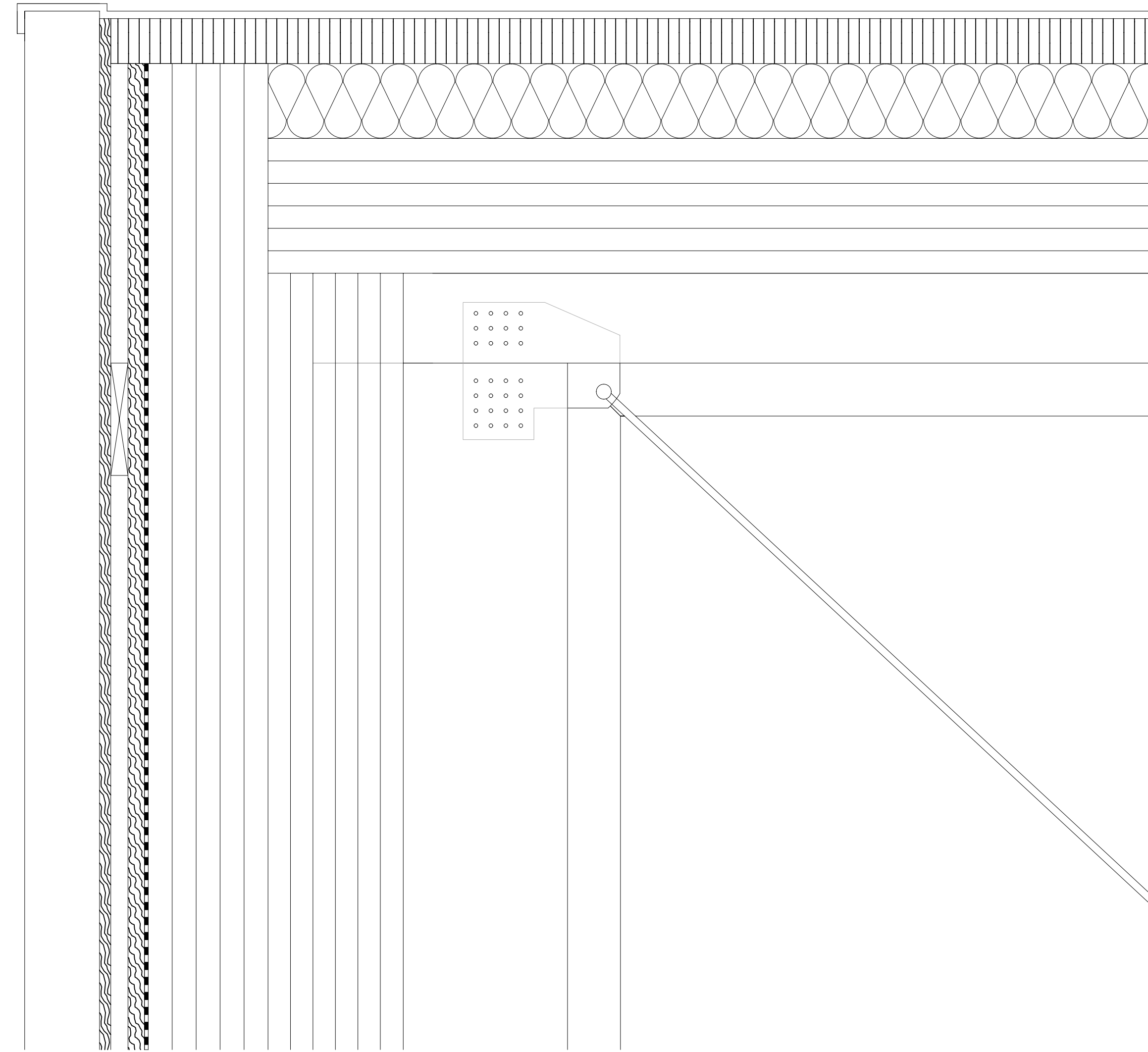


Schnitt A-A 1:50

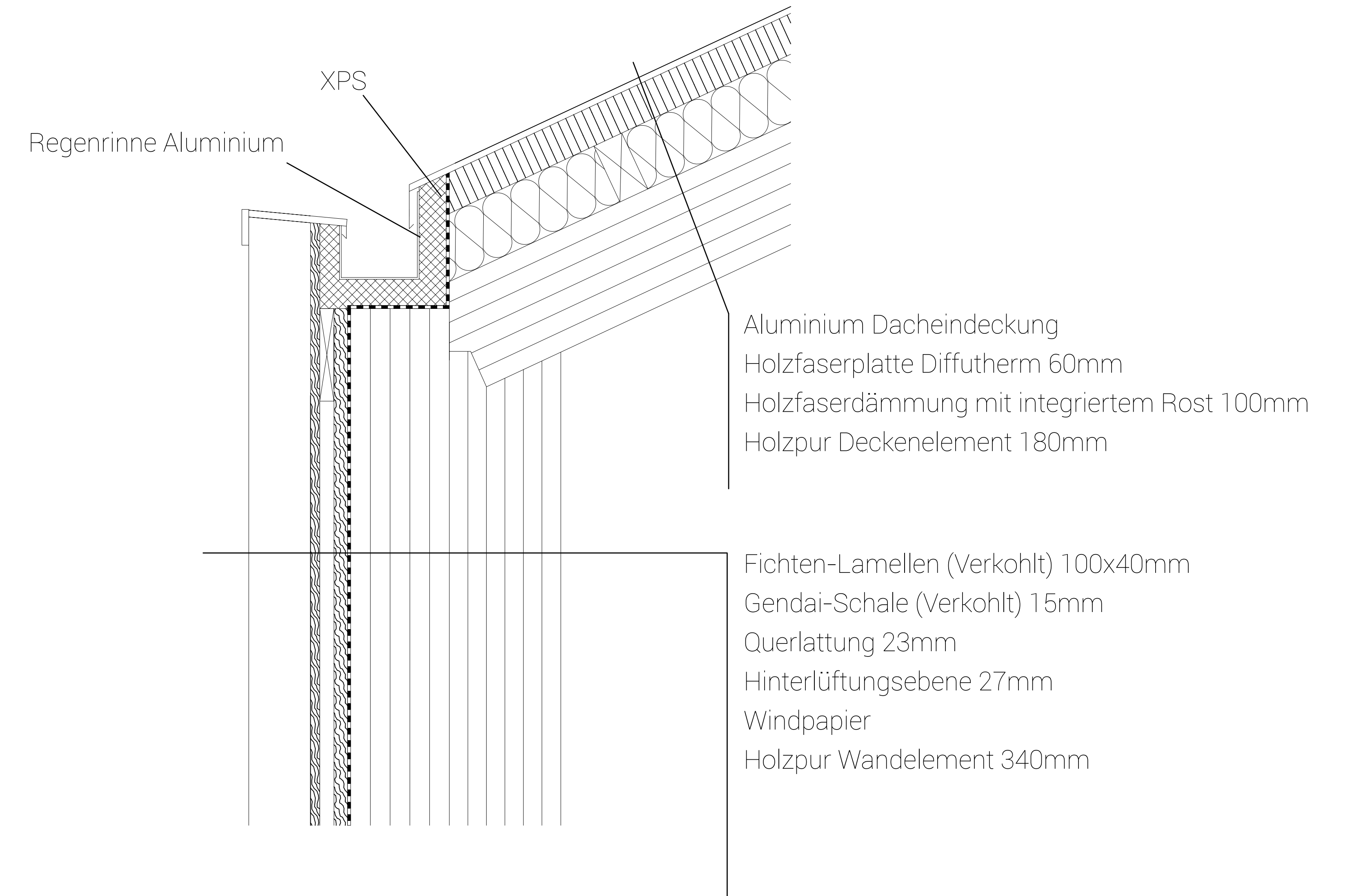


Detailpunkt A 1:5

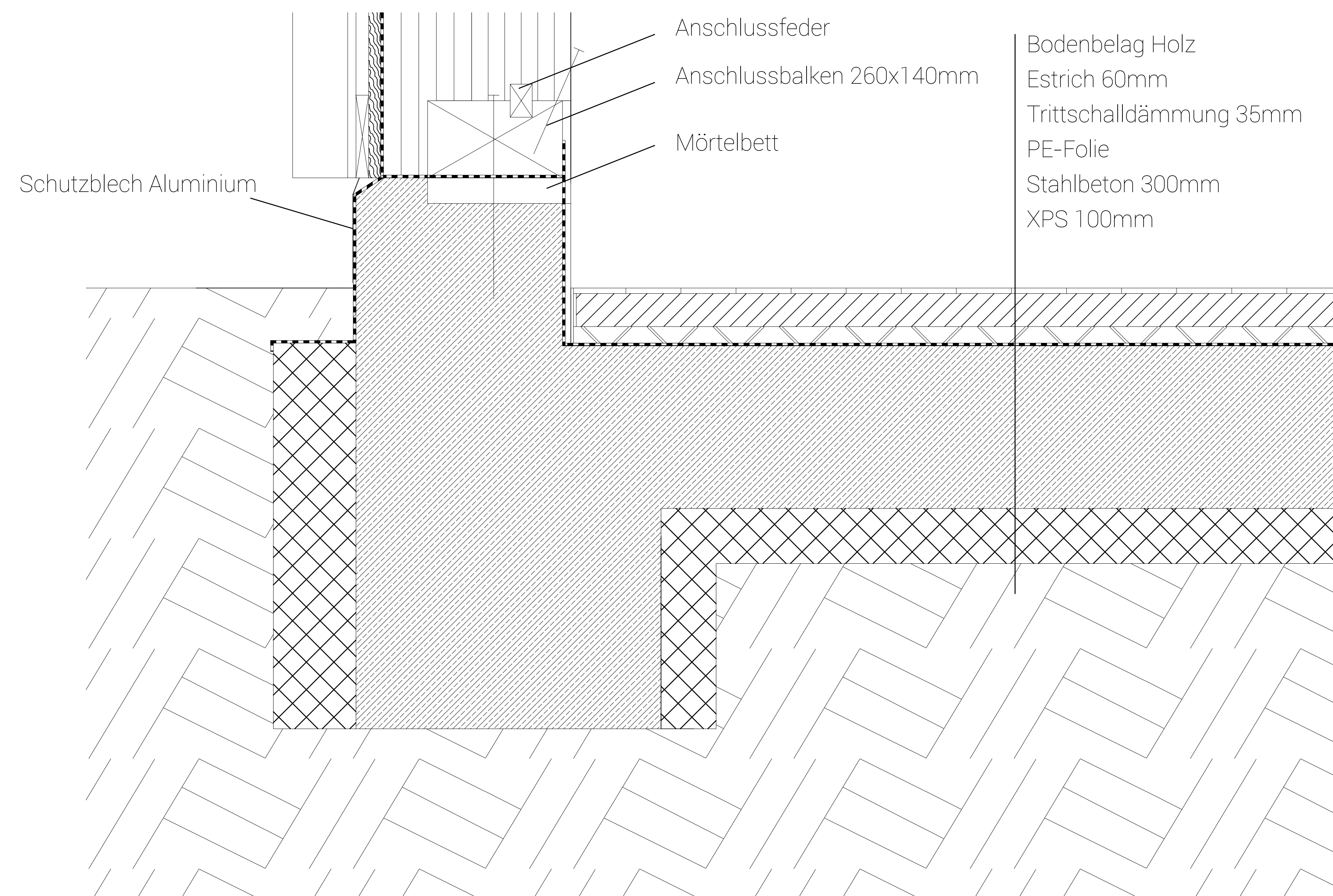




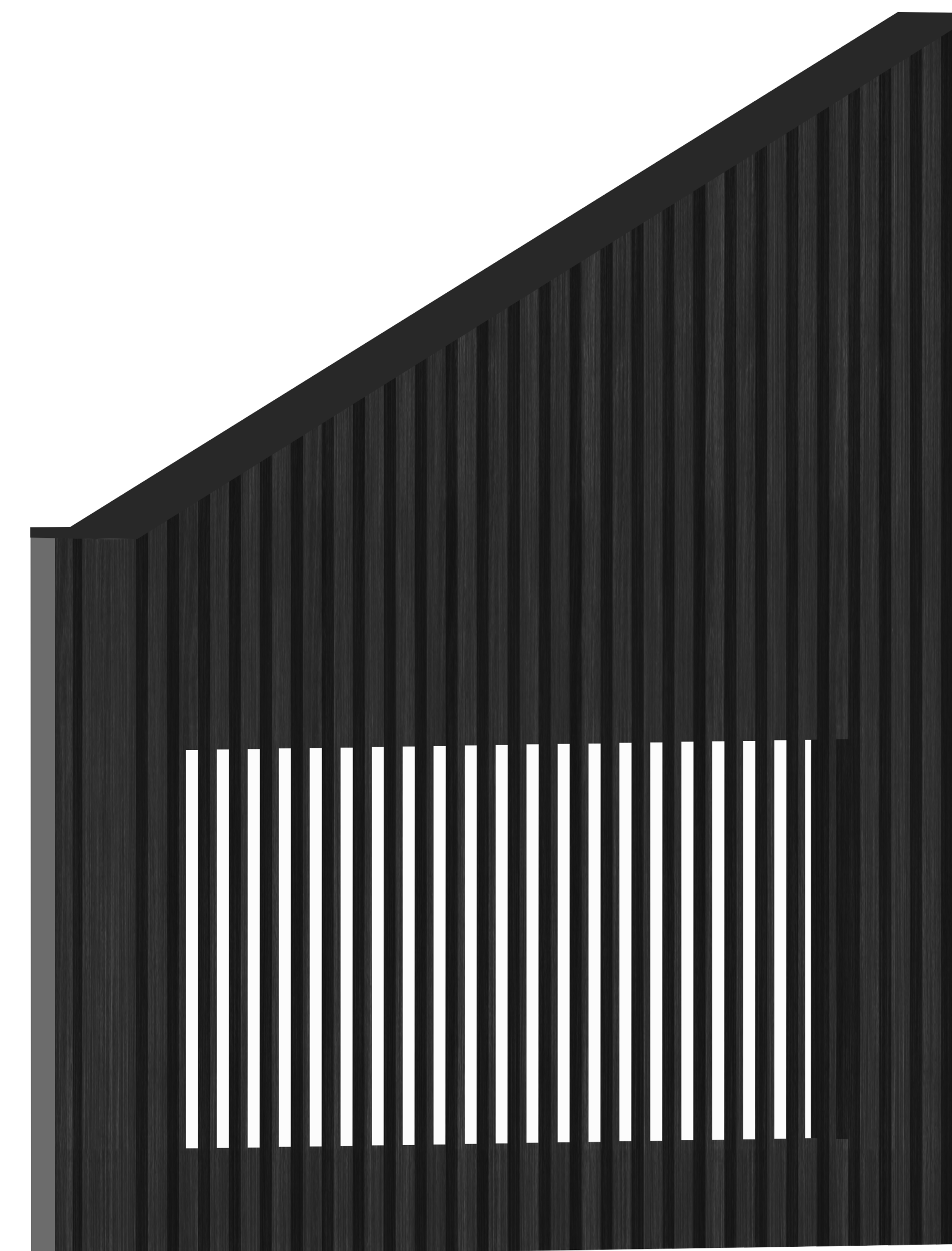
Detailpunkt C 1:5



Detailpunkt B 1:5

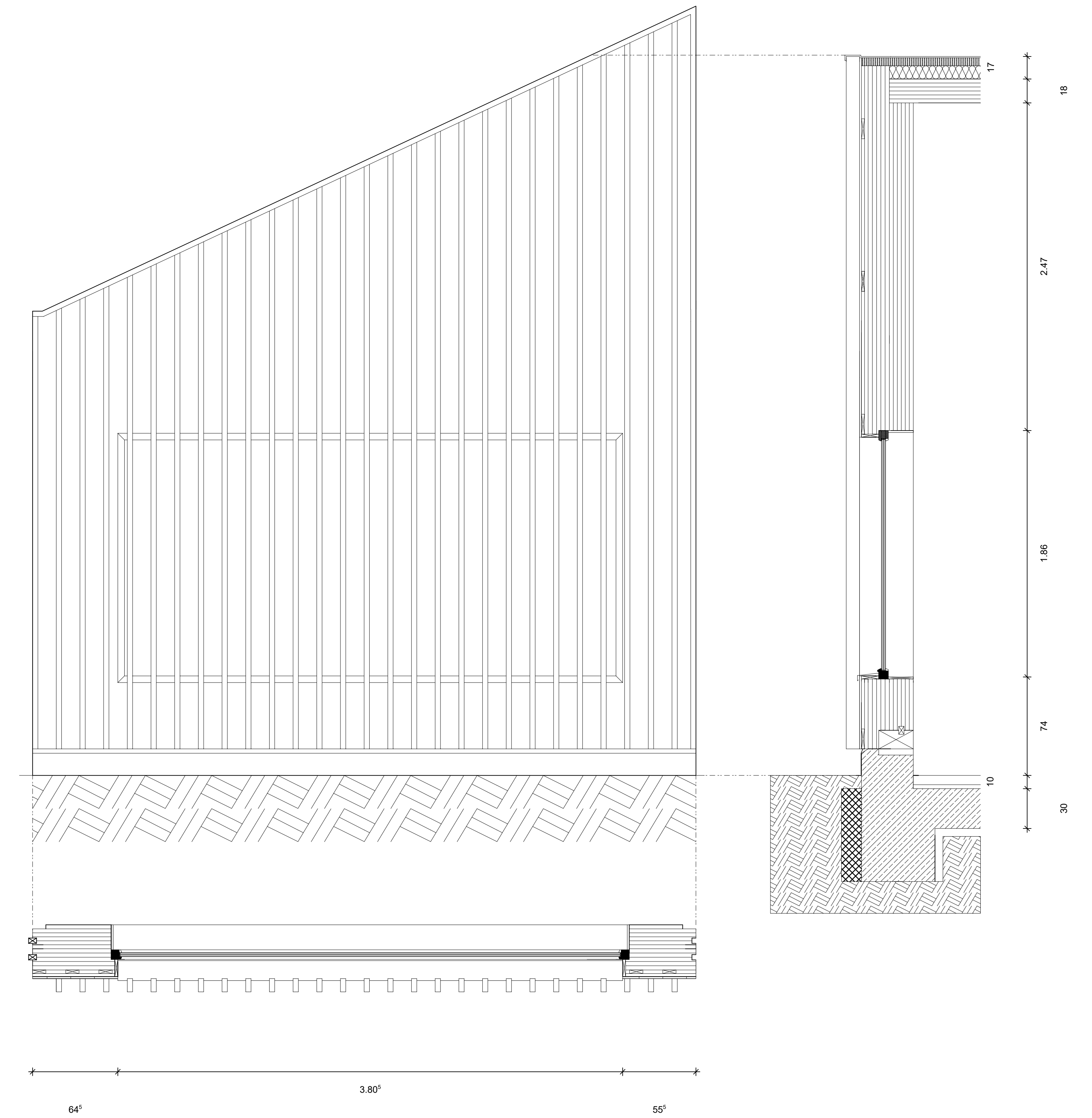
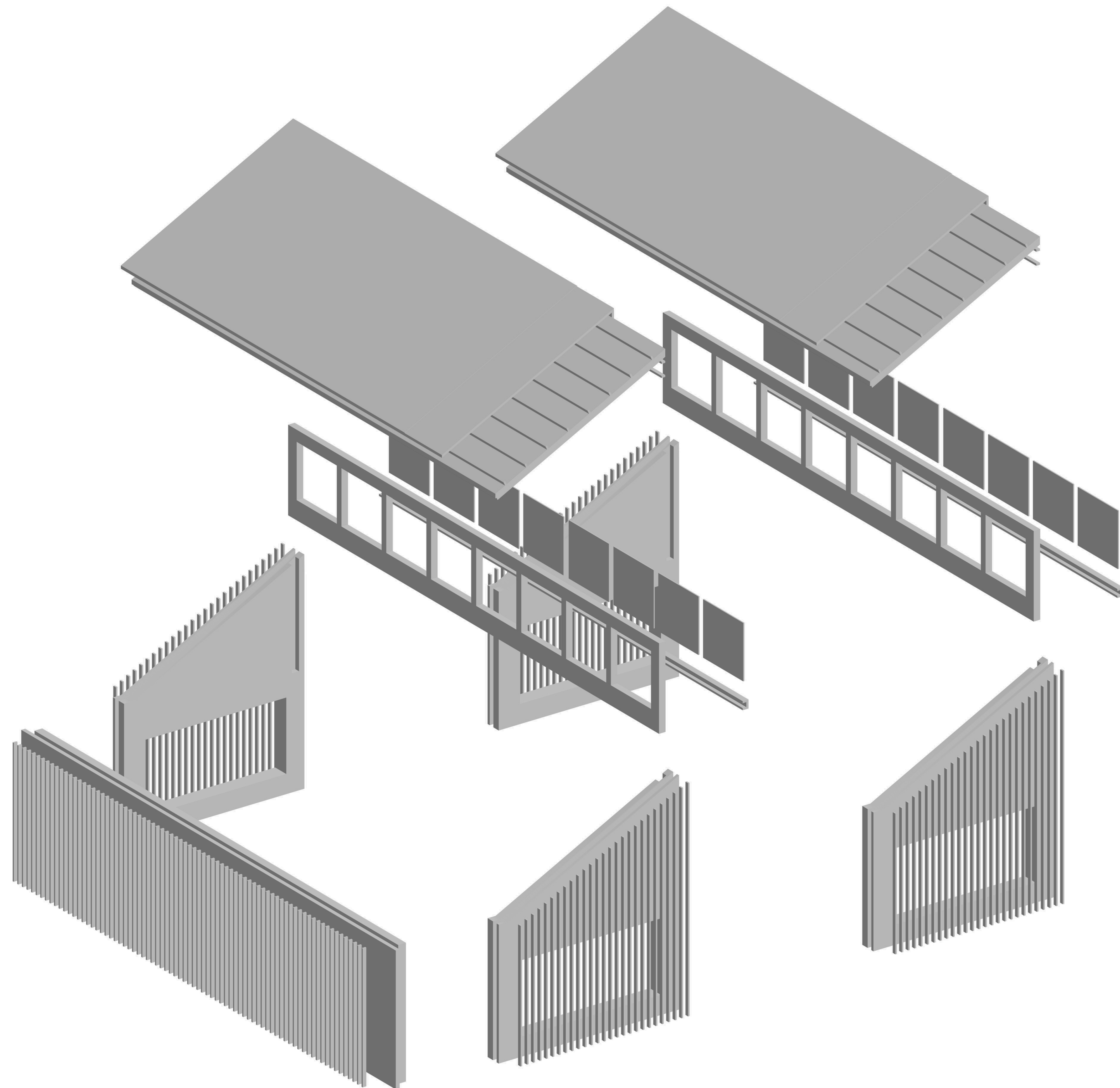


Sockel Detail 1:5



Fassade Perspektive



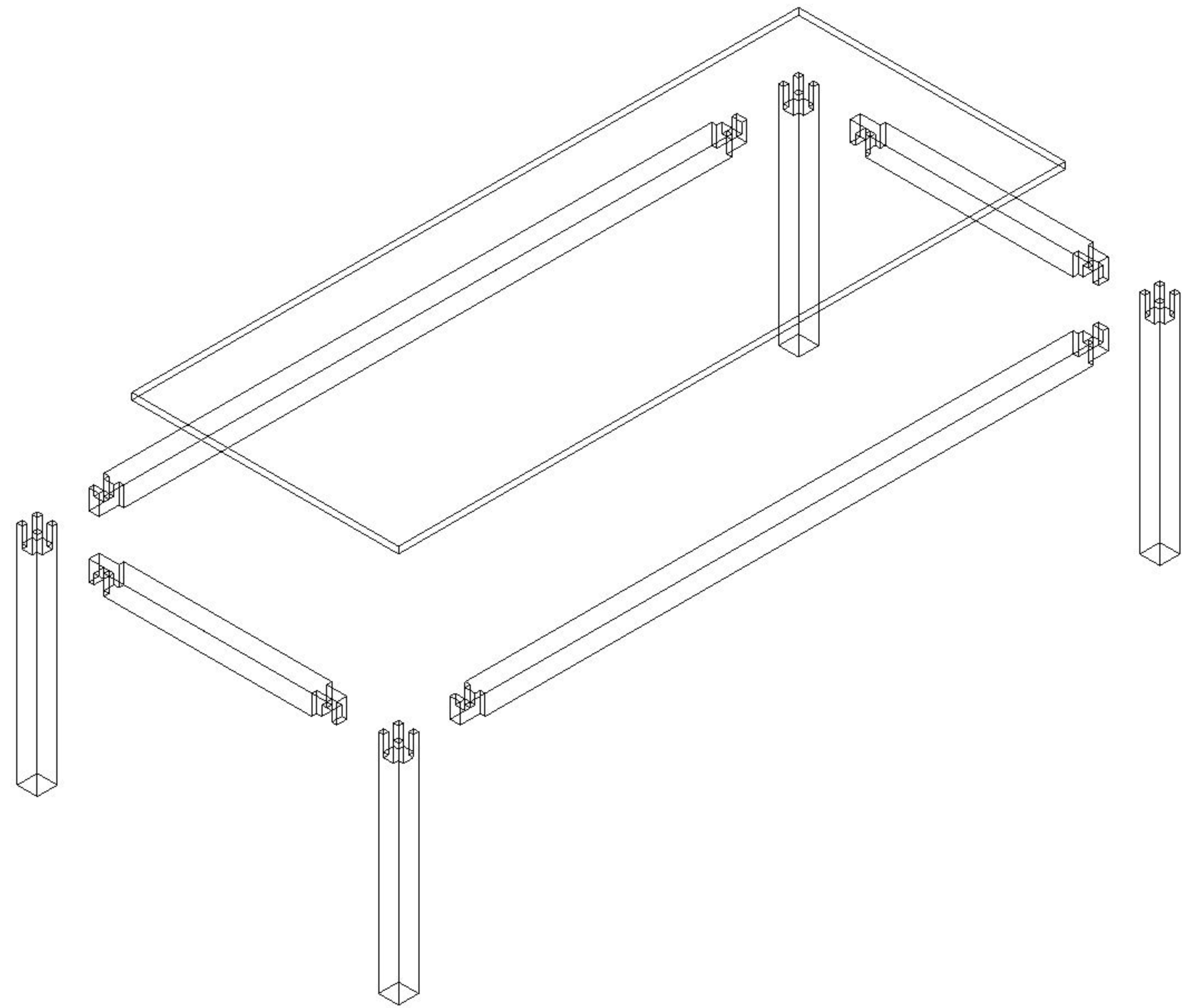
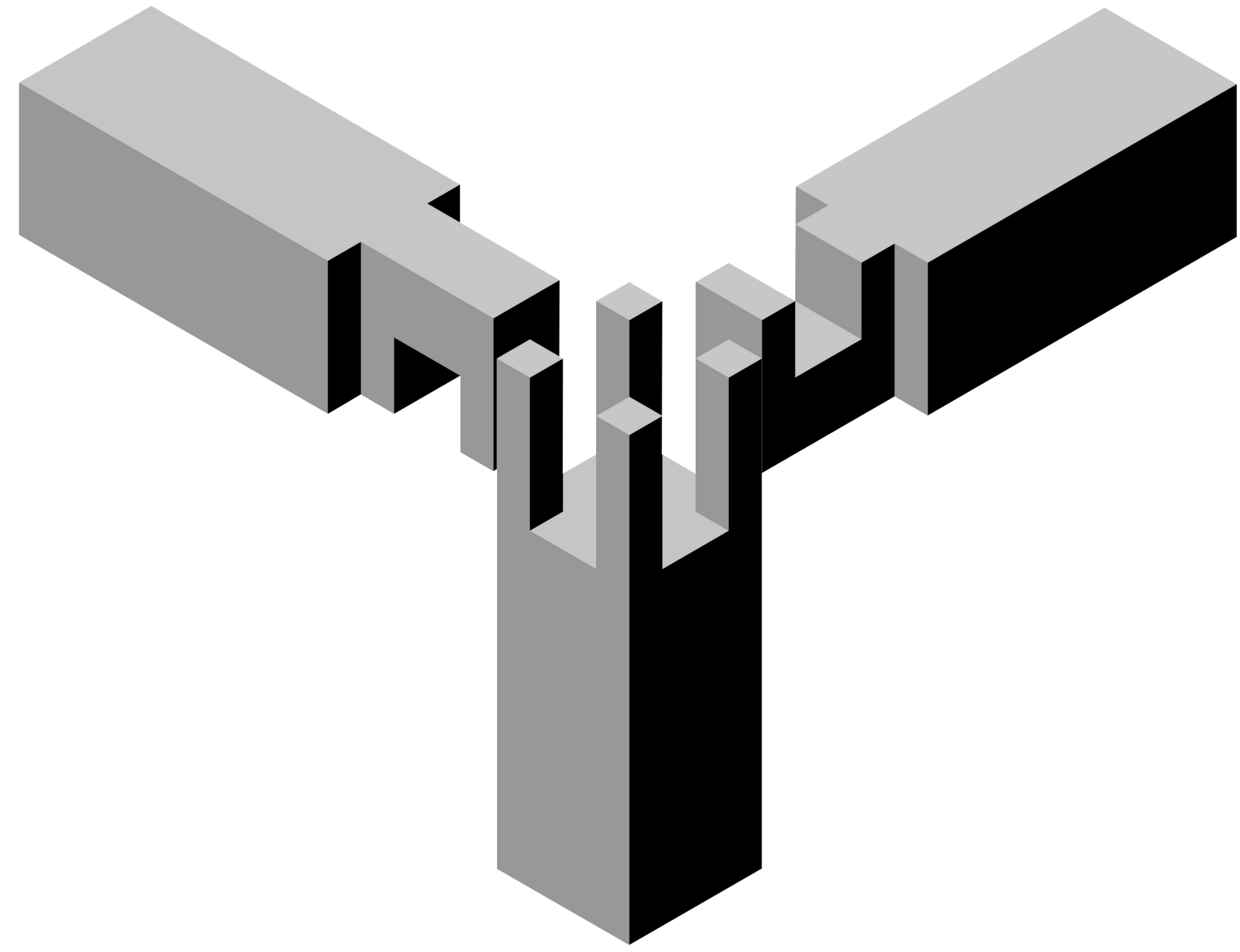


Fassadenschnitt 1:20

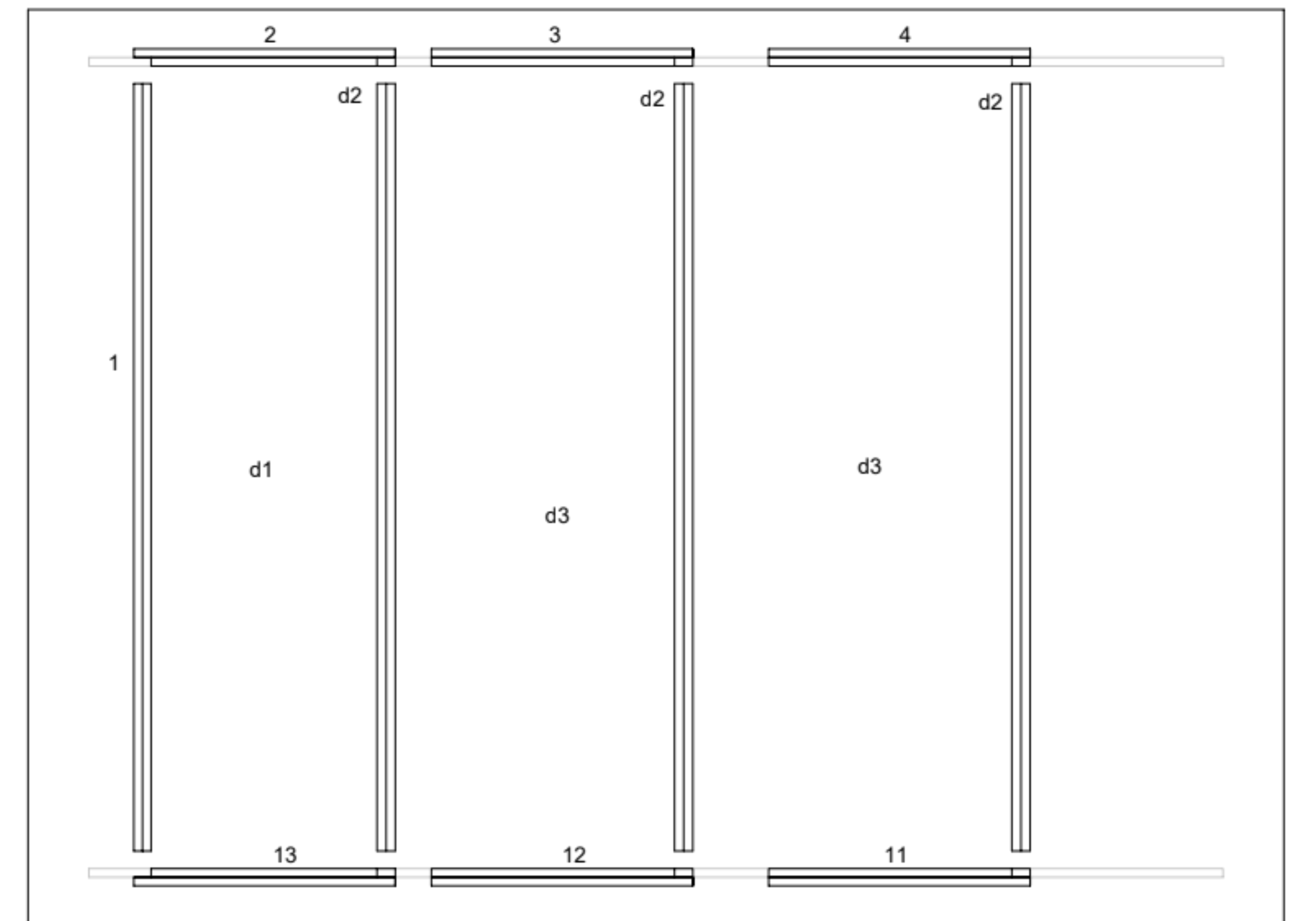
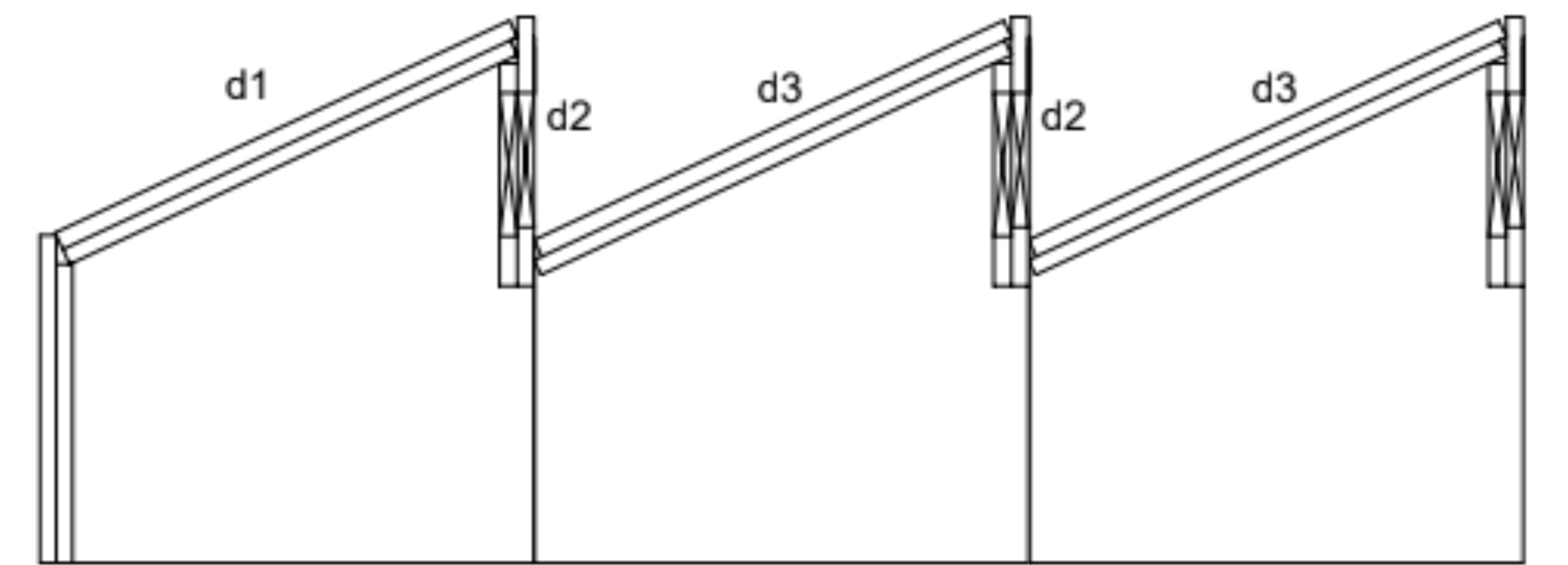
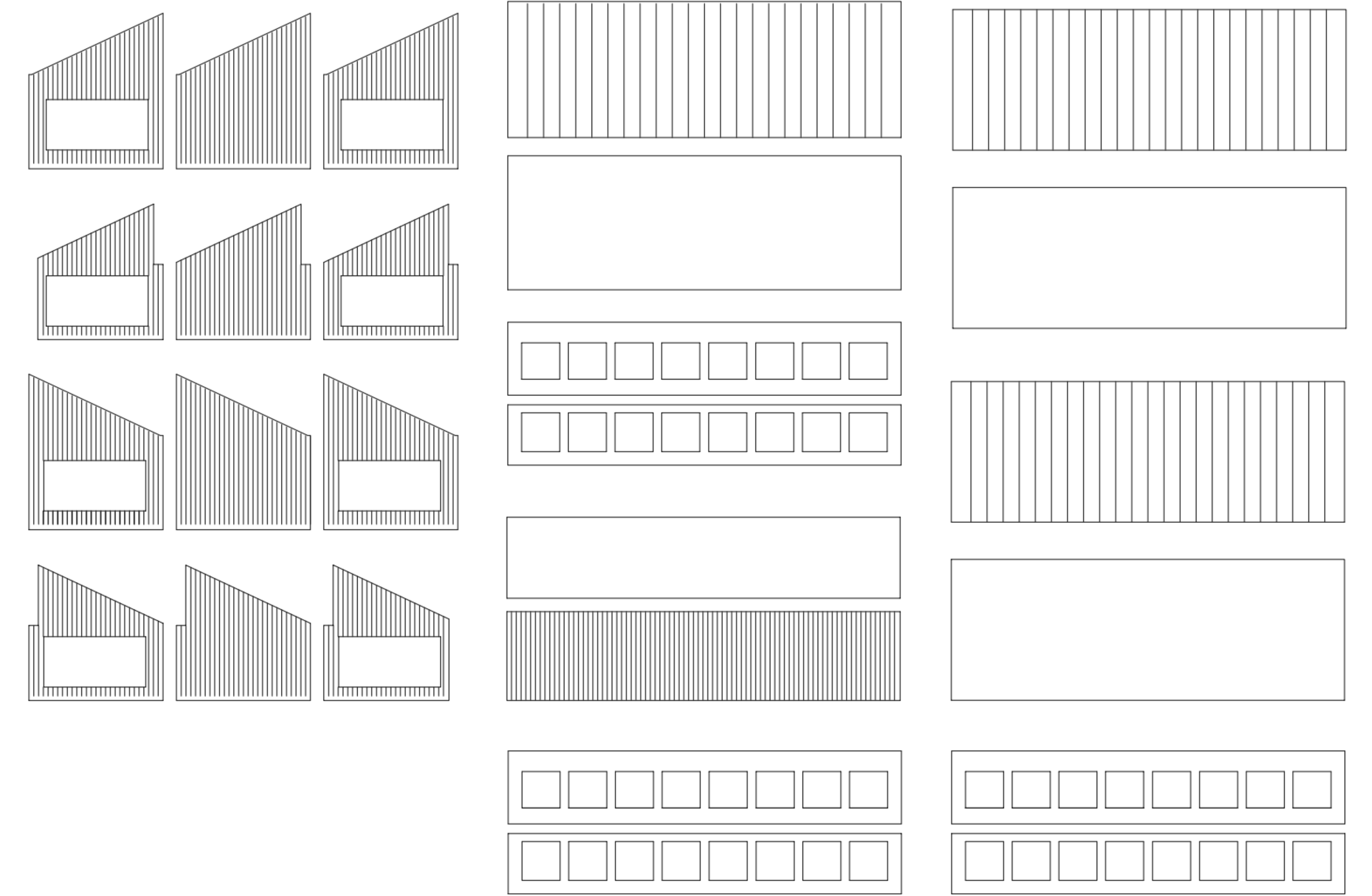
Änderungen zu letzter Korrektur :

- Anpassung Wandaufbau: Holzpur+ Hinterlüftung
- Elementstoß Außenwand angepasst
- Türzargen angepasst
- Fenster auf Tischhöhe
- Sockel überarbeitet
- Fenster an Eingangsfassade verkleinert + an Lamellen angepasst
- Fenster in Eingangsvertiefung entfernt





Fügungspunkt



Modellbauplan